

PML-RARA REAL TIME PCR DETECTION KIT

ONKOTEST R5010-20



Keep the kit at -15°C to -25°C

Rev. 1.4

Product Information

Acute promyelocytic leukemia (APL) is a subtype of acute myeloid leukemia (AML) genetically characterized by the t(15;17)(q22;q11) translocation. The use of all-trans retinoic acid (ATRA) has led to APL having one of the most favorable prognosis among AML FAB subtypes. More than 99% of APL patients carry a translocation which results in the fusion of the retinoic acid receptor-alpha (RAR α) gene on chromosome 17q and the PML gene on chromosome 15q. Three transcripts are observed: an **exon6^{PML}/exon3^{RARA}** fusion an **exon3^{PML}/exon3^{RARA}** fusion or **exon6^{PML}/exon6^{RARA}**.

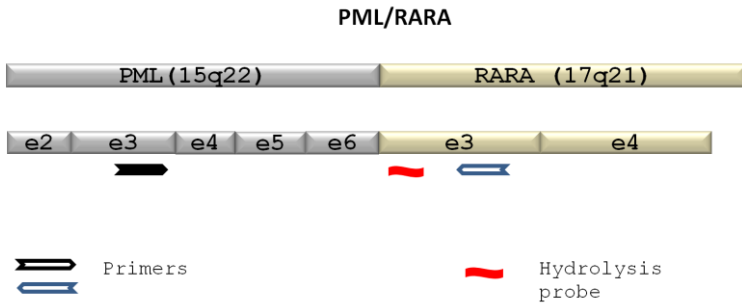


Figure 1: Annealing locations of the PCR primers and hydrolysis probe

The **onkotest R5010-20** kit, uses fluorescent labeled probes to detect the **exon6^{PML}/exon3^{RARA}** and **exon3^{PML}/exon3^{RARA}** three fusion transcripts with high precision and sensibility. This kit will not detect mRNA breakpoint products that are outside the sequence confined by the PCR primers provided within the kit.

Kit Contents

Tube	Labeling	Volume& Content
1	Real Time Master Mix (2X)	565 µl (2X) - enough for 56 reactions. Ready to use real time PCR reaction mix.
2	PML-RARA Primer Mix	40 µl- enough for 20 patient samples, 8 positive control and 8 negative control reactions.
3	PML-RARA probe	40 µl- enough for 20 patient samples, 8 positive control and 8 negative control reactions.
4	Positive Control	40 µl- contains a positive control template enough for 8 reactions.
5	ABL Primer Mix	20 µl- enough for real time reactions of 20 patient samples.
6	ABL Probe	20 µl- enough for real time reactions of 20 patient samples.
7	H ₂ O (PCR grade)	500 µl- Nuclease free. PCR grade. Use for reaction mixture preparation and as template for negative control reactions.
8	ROX (6µM)	40 µl

The onkotest R5010-20 kit is designed to work with all real time thermal cycler instruments (the onkotest R5010-20 kit has been optimized to work without ROX dye, it can easily be used with ABI real time instruments without ROX. Nevertheless if ROX is to be used, add 1 µl to each reaction tube (the final concentration will be 300nM after the addition of 1 µl ROX). If ROX is added, do not forget to also reduce dH₂O by 1 µl to keep the total reaction volume at 20 µL)

Kit Description

The **onkotest R5010-20** kit uses cDNA of patients (converted from total RNA by reverse transcription) as template for PCR reactions. Real time PCR will amplify target the PML-RARA and ABL regions by using highly specific primers provided with the kit. The hydrolysis probe will specifically hybridize to its own complementary target sequence within the amplified PCR product. It is a dual labeled probe in which the fluorophore FAM (6-carboxyfluorescein) is covalently attached to the 5'-end; while a quencher, BHQ (Black hole quencher) is attached at the 3'-end. The quencher molecule quenches the fluorescence emitted by the fluorophore, so as long as the fluorophore and the quencher are in proximity, fluorescence signals are inhibited. When the probe hybridizes to its specific sequence, the 5'→3' exonuclease activity of the polymerase degrades the probe and breaks the close proximity between the fluorophore and the quencher. As a result the fluorophore is relieved of the quenching effect and is able to emit fluorescence which can be detected (Figure 2). The fluorescence detected is directly proportional to the amount of fluorophore released, therefore also directly proportional to the amount of DNA template present in the PCR. The hydrolysis probe is both highly sensitive and highly specific; for it requires the presence and amplification of its complementary sequence by the specific primers provided within **onkotest R5010-20** kit.

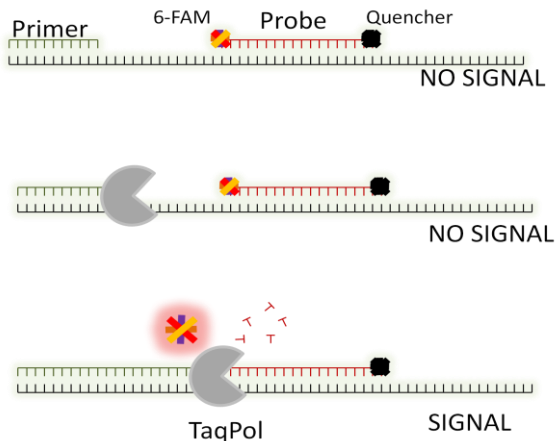


Figure 2: Hydrolysis probe

The positive and internal controls provided with the kit are aimed to prevent false negative results that may be the outcome of failed reactions or poor template quality. Using H₂O as a negative control aims to prevent false positive results by the detection of cross contamination.

Sample Material:

The **onkotest R5010-20** kit is intended for the accurate detection of PML-RARA transcripts in bone marrow or peripheral blood samples (EDTA - ethylenediaminetetraacetic acid is the preferred as anticoagulant, heparin may inhibit the PCR reaction) of patients. The kit uses cDNA (converted from total RNA by reverse transcription) as template for the PCR reactions. Using patient RNA directly as template will not yield results.

Number of Tests:

The **onkotest R5010-20** kit contains the reaction mix, primers and probes enough for PML-RARA and internal control ABL reactions of 20 patient samples. The kit also provides the reaction mix, primers and probes enough for 8 positive control and 8 negative control reactions.

Handling & Storage

The components of kit should be stored at -20° C. Protect fluorescent probes (tubes 3 and 6) from light. While setting up PCR reactions, kit components should be placed on ice. Multiple freeze-thaw cycles may result in the degradation of protein reagents.

IMPORTANT: In order to prevent cross contamination, the positive control tube inside the kit should be stored separately from test samples and added to the reaction mix in a separate area during assay preparation.

Materials Required But Not Provided

Equipment

Real-time thermal cycler
Laminar flow hood/biological safety cabinet
Vortex
Spin-down microcentrifuge
Micropipettes

Consumables

Sterile filtered pipette tips
Serological pipettes
0,2 ml PCR tubes/Capillary tubes/strip tubes/plates (depending on the real-time instrument)

Important Notes & Precautions:

- Separate areas dedicated for RNA isolation, cDNA/PCR reaction preparation and agarose gel electrophoresis is strongly recommended.
- Lab coats and safety equipment (goggles ect.) should be specifically designated to each area
- Separate micropipette sets for each area is strongly recommended.
- Micropipette tips should be DNase - RNase free and preferably filtered.
- In order to prevent cross contamination between patient samples, total RNA isolation of samples should be performed separately.
- Avoid biohazard exposure by observing universal precautions when handling all biological materials.

Before You Begin

Before starting be sure the tube contents are fully dissolved. Mix tube contents briefly by vortexing, followed by a spin-down centrifugation to bring down tube contents. Keep all test samples and kit contents on ice when in use.

Procedure

Negative control (NC) - (dH₂O): Tube number 7 is the “no template negative control”. This control replaces template cDNA with water in the PCR reactions. It aims for the detection of any cross contamination. The negative control should not give any positive signal. In cases where a positive reaction signal is detected, **ALL** reactions must be repeated. The kit provides PML-RARA primers and probes enough for 8 reactions.

Positive control (PC): Tube number 4 contains the positive control template which is the product of the **exon6^{PML}/exon3^{RARA}** fusion. It is expected to give a 621 bp size product. PML-RARA detection **MUST BE** positive when this control is used. Otherwise all reactions for all samples must be repeated. It gives a band 621 bp in size on agarose gel electrophoresis. To avoid false positive results resulting from cross contamination we strongly suggest the addition of positive control template in to its reaction mix in a separate area. The kit provides positive control template enough for 8 reactions. This positive control template should not be diluted when used. We recommend the positive control to be evaluated after the 13th cycle. Signal observed at lower cycle numbers should be evaluated as false positive.

Patient Sample Internal Control (IC)-(ABL): The ABL gene product is used as internal control. cDNA from patient samples are used as template for this reaction. The PCR product size is 123 bp. Patient sample PCRs that are negative for ABL, designate poor template quality (RNA and/or cDNA unsuitable for analyses). In case of a negative internal control (negative result for ABL expression), a new cDNA conversion from total RNA should be performed and both PML-RARA and ABL PCR reactions should be repeated. New RNA extraction from patient bone marrow/peripheral blood should be performed in cases where a second negative result for the internal control is obtained.

Preparation of the Real-time PCR Mix

Real-time PCR Reaction Panel for One Patient *:

	Negative Control **	Positive Control	Patient ABL	Patient PML-RARA
dH ₂ O (tube 7)	8 µl	3 µl	3 µl	3 µl
Real time master mix (2X)(tube 1)	10 µl	10 µl	10 µl	10 µl
PML-RARA primer mix (tube 2)	1 µl	1 µl	-	1 µl
PML-RARA probe (tube 3)	1 µl	1 µl	-	1 µl
Positive Control (tube 4)	-	5 µl	-	-
ABL primer (tube 5)	-	-	1 µl	-
ABL probe (tube 6)	-	-	1 µl	-
Patient cDNA template	-	-	5 µl	5 µl

Total reaction volume 20 µL

* When more than one patient sample is being tested in a single reaction panel, using one positive and one negative reaction control will be sufficient.

**dH₂O replaces the template

Thermal Profile for Real-Time PCR Instrument

Denaturation	95°C	10 minutes	1 cycle
Reaction	95°C	10 seconds	35 cycle
	58°C	40 seconds (signal acquisition step)*	
Cooling	40 °C	1 minute	1 cycle

When creating your thermal profile if your instrument requires you to define parameters for the 5' and 3' ends: select 6-FAM for the 5 prime end, and "quencher dye" for the 3 prime end.

Evaluation:

The instrument you use will evaluate the real-time PCR reactions using its own software. The onkotest R5010-20 kit has been optimized to perform PML-RARA gene product analyses with very high sensitivity. PCR primers and probes have been design to prevent non-specific reactions. Nevertheless we recommend running the PCR products on 2% agarose gel electrophoresis and visualizing the expected specific band. The positive control (**exon6^{PML}/exon3^{RARA}**) is expected to be a 621 bp size product. The expected band size for ABL is 123 bp (Figure 3). On the other hand the **exon3^{PML}/exon3^{RARA}** fusion and the breakpoint within **exon 6** will give 145bp and 175 bp PCR products respectively.

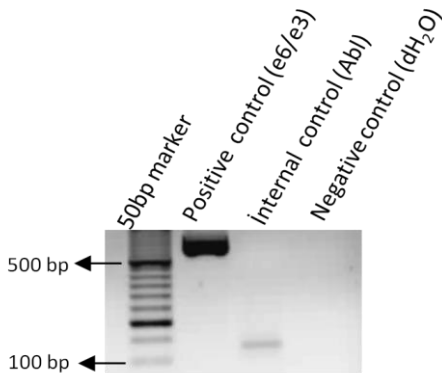









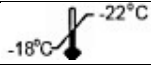

Figure 3: Agarose gel electrophoresis of PCR control reactions.

Product Specifications

Kit Capacity	20 samples
Control Gene	ABL
Reported Values	PML-RARA Transcripts (bcr1, bcr2, bcr3)
Components	PML-RARA primer mix/probe ABL primer mix/probe DNA Plasmid Control (PML-RARA)
Tested Platforms	Roche [®] LC480, LightCycler [®] 1.5, 2.0; ABI [®] StepOnePlus [™] ; Corbett [®] Rotor-Gene [®] 6000
Product Order No.	R5010-20

Symbols

The following symbols may appear on the packaging and labeling:

	CE sign
	Manufacturer
	Consult instructions for use
	In vitro diagnostic
	Manufacturing date
	Catalog number
	Lot number
	Temperature limitation
	Expiration date



CONTACT:

ONKO TEST GENETİK ARAŞTIRMA PROJELENDİRME
SANAYİ VE TİCARET LTD.ŞTİ.

Dokuz Eylul University
DEPARK -(Technology Development Zone) Office: 202
Balcova, İZMİR-TURKEY
Tel: 90-232-4642088
90-216-5732591
info@onkotest.com